



SPEED QUEEN | PROFESSIONAL

# Stacked Washers and Dryers for Vend

## Features Stack Units

- Totally freestanding: can be installed on any floor and any level
- Reduced floor space
- Top, front and side panels standard available in anthracite grey
- Door opens 180° for easy loading and unloading
- LED notification of the status of the program
- Programmable by Infra Red
- Time remaining countdown

## STWC (Washer & Dryer)

### Features Washer Extractors

- Stainless steel outer and inner drum
- Industry-leading 440 G-Force extraction removes more moisture, minimizing drying times and utility costs
- Suspension with new out-of-balance logic
- Soap box with four compartments
- Standard with drain pump, drain valve optionally available
- Electrical heating or boiler-fed
- Soap supply injection allows easy connection with liquid soap pumps
- Longer lifetime: at least 15,000 cycles

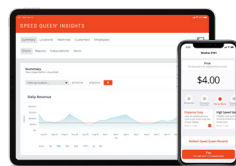
### Quantum Controls

- 6 programs
- 3 cycle modifiers



## Connectivity

Wi-fi connectivity via accessory, enabling access to Speed Queen Insights



## STDC (Dryer & Dryer)

### Features dryers

- Galvanized steel cylinder
- Oversized lint filter located in front for easy cleaning
- Powerful exhaust blower assures short drying times and low operating costs
- Electrical or gas heating

### Quantum Controls

- 4 drying programs



### Best-in-class Quantum® Gold Controls

Revolutionary Quantum® Gold technology combines equipment controls, programming and wireless networking into one full-store management system, including: wireless networking, adjustable water levels, "lucky cycle" feature, time of day pricing, customizable cycle modifiers, and in-depth reporting. Design to reduce costs and maximize revenue, Quantum gives you the power to achieve unprecedented levels of profitability.



Fast cycles



Large Door Opening



Low Water Consumption



Low Energy Consumption



Standard Stainless Steel Drum



Compact Design

# Stacked Washer & Dryer

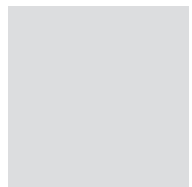
## Specifications

	STWC							
	ST2JLAS-P403UN01	ST2JLAS-P403UG01	ST3JLAS-P403UN01	ST3JLAS-P403UG01	ST3JLA-JP403UG43	ST3JLAS-G403UG01	STEJLAS-P543ZG01	ST3JLASP-403NG22
Market	Europe/CE	Europe/CE	Europe/CE	Europe/CE	Europe/CE	Europe/CE	Universal IEC	No agency
Actuation	OPL <sup>1</sup> / PCP <sup>2</sup>	OPL <sup>1</sup> / PCP <sup>2</sup>	OPL <sup>1</sup> / PCP <sup>2</sup>	OPL <sup>1</sup> / PCP <sup>2</sup>	OPL <sup>1</sup> / PCP <sup>2</sup>	OPL <sup>1</sup> / PCP <sup>2</sup>	OPL <sup>1</sup> / PCP <sup>2</sup>	OPL <sup>1</sup> / PCP <sup>2</sup>
Heating	Electric W-Gas D	Electric W-Gas D	3ph W,3ph D	3ph W,3ph D	3ph W,3ph D	3ph W,3ph D	Electric	3ph W,3ph D
Voltage	400v/50Hz/3N	400v/50Hz/3N	400v/50Hz/3N	400v/50Hz/3N	400v/50Hz/3N	400v/50Hz/3N	220v/60Hz/1N	400v/50Hz/3N
Control Location	10° front control	10° front control	10° front control	10° front control	10° front control	10° front control	10° front control	10° front control
Color	Stainless	Grey	Stainless	Grey	Grey	Grey	Grey	Grey
Basket	Stainless	Stainless	Stainless	Stainless	Stainless	Stainless	Stainless	Stainless
Drain	Pump	Pump	Pump	Pump	Pump	Pump	Gravity drain	Pump
	ST2JXAS-P403UG01	ST2JXAS-P403UN01	ST2JXAS-P403EG01	STHJXAS-P553UG16	ST3JXAS-P403UG01	ST3JXAS-P403UN01	ST1JXAS-P403EG01	STHJYASP-543NW01 <sup>3</sup>
Market	Europe/CE	Europe/CE	UK	Europe/CE	Europe/CE	Europe/CE	UK	No agency
Actuation	Prep for coin	Prep for coin	Prep for coin	Prep for coin	Prep for coin	Prep for coin	Prep for coin	Prep for coin
Heating	Electric W-Gas D	Electric W-Gas D	Electric W-Gas D	Heated W-elec D	3ph W,3ph D	3ph W,3ph D	Electric W-Elec D	Heated W-elec D
Voltage	400v/50Hz/3N	400v/50Hz/3N	400v/50Hz/3N	400v/50Hz/3N	400v/50Hz/3N	400v/50Hz/3N	400v/50Hz/3N	220v/60Hz/1N
Control Location	10° front control	10° front control	10° front control	10° front control	10° front control	10° front control	10° front control	10° front control
Color	Grey	Stainless	Grey	Grey	Grey	Stainless	Grey	White
Basket	Stainless	Stainless	Stainless	Stainless	Stainless	Stainless	Stainless	Stainless
Drain	Pump	Pump	Pump	Pump	Pump	Pump	Pump	Pump

<sup>1</sup> OPL On Premise Laundry

<sup>2</sup> Prep for Central Pay

<sup>3</sup> Model for Marine



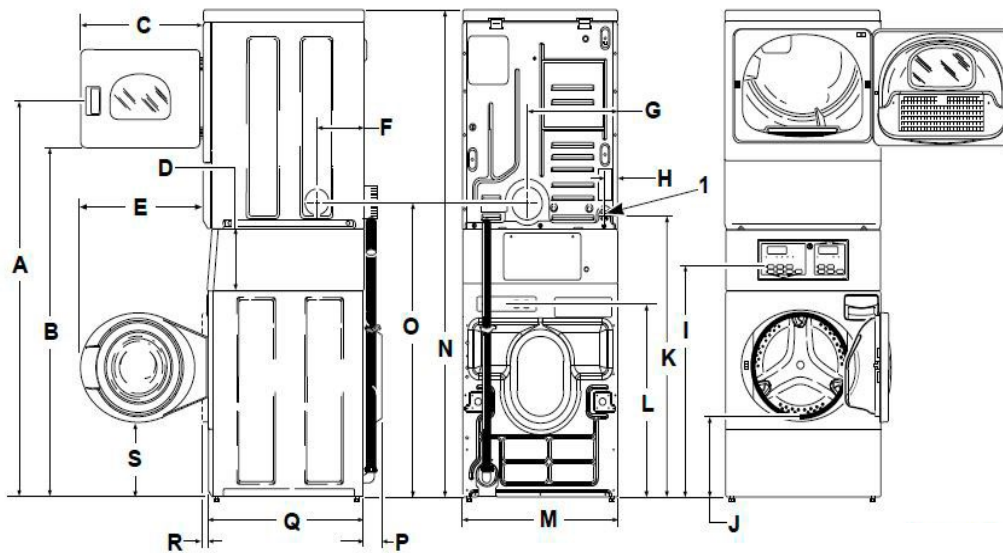
# Stacked Washer & Dryer

## Specifications

Washer Extractor		
CAPACITY	kg	10,5
DRUM VOLUME	l	96,8
MOTOR		
Frequency controlled	kW	0,67
EXTRACTION SPEED	rpm	1200
G-FACTOR		440
ELECTRICAL HEATING		
Electrical	kW	4,8
TYPE OF CONTROL		Quantum

Stacked Washer & Dryer		
DIMENSIONS H×W×D	mm	1986×683×704
Net weight	kg	177
TRANSPORT DATA		
Volume (packed)	m <sup>3</sup>	1,25
Packed H×W×D	mm	2032×760×860
Gross weight	kg	193
Ratio 1:9	kg	10,5

Dryer		
CAPACITY	kg	8,2
DRUM VOLUME	l	198
MOTOR		
Frequency controlled	kW	0,67
EXTRACTION SPEED	rpm	1200
G-FACTOR		440
ELECTRICAL HEATING	kW	5,2 (230V) 5,3 (400V)
GAS HEATING	kW	7,3
MOTOR POWER	kW	0,25
TYPE OF CONTROL		Quantum



	A	B	C	D	E	F	G	H	I	J	K	L	M	N	O	P	Q	R	S
mm	1678	1447	597	213	610	203	391	59	938	371	1140	813	683	1986	1184	52	704	38	333

# Stacked Dryer & Dryer

## Specifications

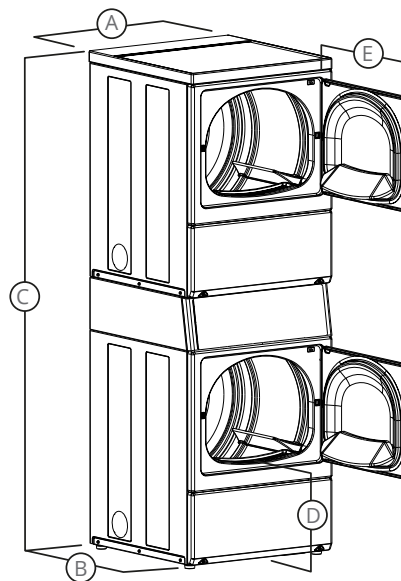
	STDC	
	SSGNLAGS303UG01	SS3NLAGS403UG01
Market	Europe/CE	Europe/CE
Actuation	OPL <sup>1</sup> / PCP <sup>2</sup>	OPL <sup>1</sup> / PCP <sup>2</sup>
Heating	Gas	Electric
Voltage	230v/50Hz/1N	400v/50Hz/3N
Control Location	10° front control	10° front control
Color	Grey	Grey
Basket	Galvanize	Galvanize
Drain	Solid	Solid

<sup>1</sup> OPL On Premise Laundry

<sup>2</sup> Prep for Central Pay

		Dryer
CAPACITY	kg	8,2
DRUM VOLUME	l	198
MOTOR		
Frequency controlled	kW	0,67
EXTRACTION SPEED	rpm	1200
G-FACTOR		440
ELECTRICAL HEATING	kW	5,2 (230V) 5,3 (400V)
GAS HEATING	kW	7,3
MOTOR POWER	kW	0,25
TYPE OF CONTROL		Quantum

		Stacked Dryer& Dryer
DIMENSIONS H×W×D	mm	1986x683x737
Net weight	kg	120 (el.) /125 (gas)
TRANSPORT DATA		
Volume (packed)	m <sup>3</sup>	1,30
Packed H×W×D	mm	2032×760x860
Gross weight	kg	127 (el.) /132 (gas)
Ratio 1:9	kg	10,5



A.OVERALL WIDTH - in (mm)	26.875 (683)
B. OVERALL DEPTH - in (mm)	28 (711)
C. OVERALL HEIGHT - in (mm)	78.17 (1986)
D. FLOOR TO DOOR OPENING -in (mm)	15.44 (392)
E. DOOR SWING - in (mm)	23.5 (597)